



## Fully funded opportunity to join the Creative Leadership Programme

We are delighted to be able to launch an exciting opportunity created for middle/senior school leaders, delivered by the Creative learning team at the Arts Council of Wales in partnership with the National Academy for Educational Leadership Wales.

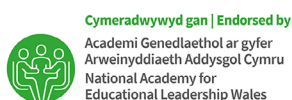
The Arts Council of Wales have secured Welsh Government funding which enables us to identify up to 30 middle/senior school leaders from across Wales with the aim of supporting you to understand the role of creativity in the context of Curriculum for Wales; and help you to encourage innovation within your own setting by raising practitioner confidence to take risks and develop resilience.

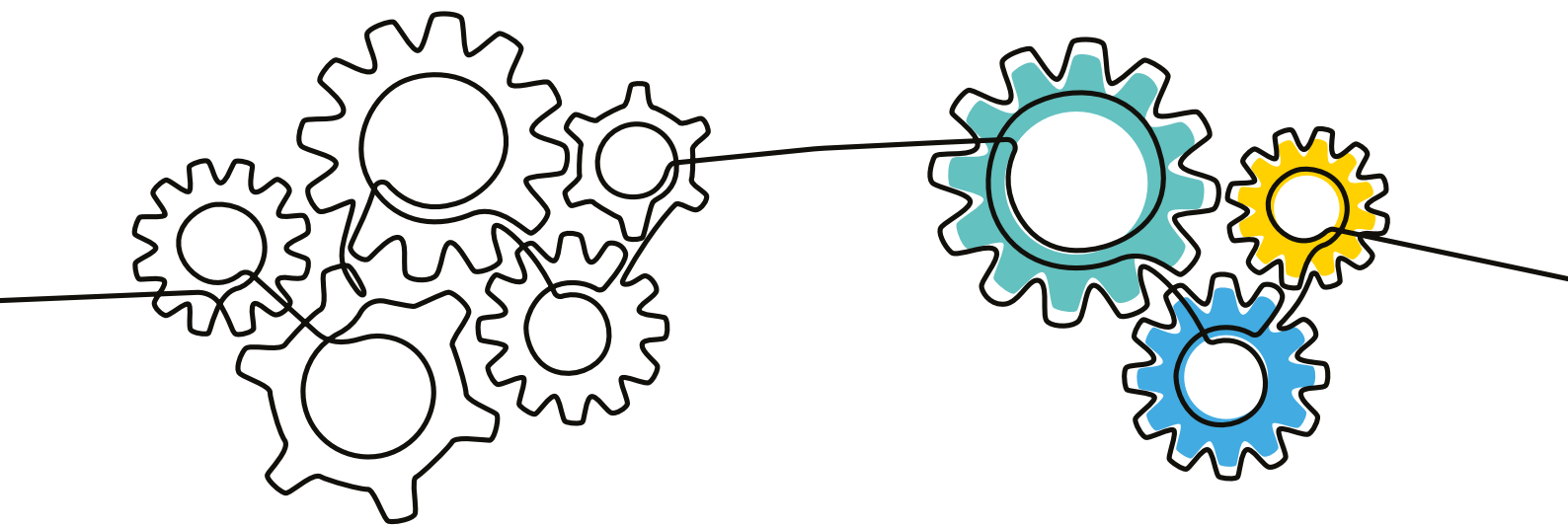
The **Creative Leadership Programme** draws on our experience of facilitating professional learning in the Lead Creative Schools Scheme and our wider understanding and knowledge, of how school leaders can encourage innovation in their setting.

Our model is based on evidence around effective professional learning and current guidance by Welsh Government. Our provision subscribes to the four-element design model of collaboration, reflective practice, use of data and research evidence and coaching and mentoring.

The key themes of experiential learning, enrichment and creative skills development are also central to our work, which is increasingly being recognised as a key factor in helping to ensure successful implementation of the Curriculum for Wales.

A partnership between the National Academy for Educational Leadership Wales and the Arts Council of Wales





The process will begin with an in-person two-day facilitated experience by the Arts Council of Wales. This will be an experiential and intensive learning opportunity with an emphasis on reflective practice. Participants will be challenged to reflect honestly about their professional practice and contexts, and identify the barriers that may impede their capacity to become creative leaders.

Following the two-day course, each senior leader will embark on a 12-18 week development programme and will be matched with a Creative Agent who will act as a leadership coach and creativity mentor or critical friend. The programme will use an enquiry-based approach to develop participants' creativity, help them to initiate change within their setting, as well as the following:

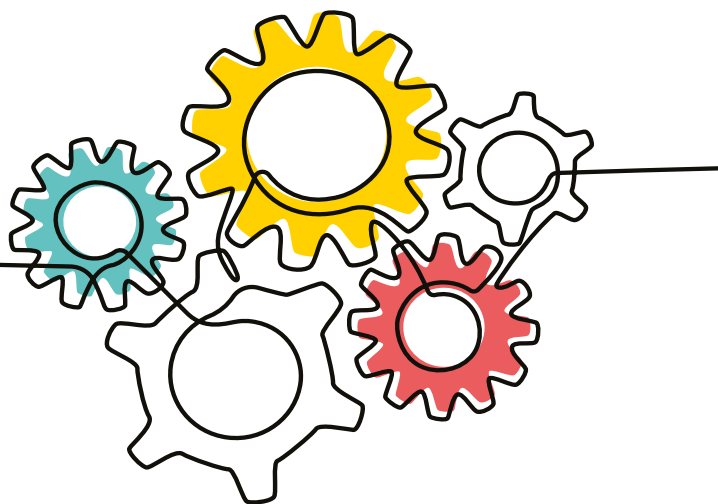
- Introduce participants to creative learning pedagogies and help them to build the confidence to disseminate the key principles to their staff.
- Develop an understanding of the central role of collaboration and co-construction in creative learning approaches.
- Promote an understanding of learning climates which encourage creativity, critical thinking and problem solving.
- Share examples of creative learning projects from the Lead Creative Schools Scheme and their impacts on teachers and pupils, as well as whole-school change.
- Encourage professional learning and teacher agency through experiential approaches, dialogue and reflective practice.
- Raise awareness of democratic spaces where all voices are considered important.
- Demonstrate how creative learning complements the new curriculum, the national approach to professional learning and schools as learning organisations model.

It is important to stress that this provision will be a bespoke offer, led by your own identification of an enquiry question around Creative leadership, although a toolbox of ideas and approaches will be given. As the process develops, it will be up to the participant to explore and trial new ways of working. They will be encouraged to contact colleagues who have developed creative practices and leadership styles, research creative pedagogies and use this to inform their work.

At the end of the process, middle/senior leaders will be required to complete an evaluation which demonstrates the impact of the enquiry and begin to plan their next cycle.

The provision inspires and motivates the current and next generation of leaders at all levels of their career, supports well-being and meets a diverse range of needs.

Feedback from school leader, 2022



This is an exciting opportunity to develop an understanding and appreciation of the impact of creative pedagogies and assist participants to create a climate for innovation and professional learning. If you would like to be considered as a participant in the Creative Leadership Programme, please use the headings given in the form below.

We would particularly welcome expressions of interest from applicants from culturally and ethnically diverse backgrounds.

We welcome expressions of interest from leaders of learning across ALL Areas of Learning Experience and not solely the Expressive Arts.

All expressions of interest should be submitted by 12 noon on Tuesday 20 February 2024 via: [Expressions of Interest form for the Creative Leadership Programme](#)

Should your expression of interest be successful, the two-day facilitated experience will take place in person at:

- South Wales: 4 & 5 March 2024
- North Wales: 11 & 12 March 2024

You will also be required to attend networking meetings online on 29 April 2024 and 5 June 2024 and a sharing event on:

- South Wales: 3 July 2024
- North Wales: 5 July 2024

Supply cover costs will be provided for all dates.

## The Providers

This professional learning opportunity will be delivered by members of the Creative Learning team at the Arts Council of Wales.

The Lead Creative Schools Scheme aims to promote new ways of working in schools, learning through the arts to provide opportunities to develop an innovative and bespoke programme of learning designed to transform the quality of teaching and learning. The scheme uses well-developed teaching and learning techniques that are specifically designed to be practical and relevant to schools and their real-life curriculum demands. These techniques are informed by extensive research from around the world into what makes a high-performing school. There are currently over 740 schools across Wales that have engaged with or benefitted from our work.

Please email any enquiries to:

- [karen.dellarmi@arts.wales](mailto:karen.dellarmi@arts.wales)
- [lora.winfield-young@arts.wales](mailto:lora.winfield-young@arts.wales)
- [shaun.featherstone@arts.wales](mailto:shaun.featherstone@arts.wales)

[Sign up to our mailing list for the latest news and opportunities.](#)



Cymeradwywyd gan | Endorsed by  
Academi Genedlaethol ar gyfer  
Arweinyddiaeth Addysgol Cymru  
National Academy for  
Educational Leadership Wales



Cyngor Celfyddydau Cymru  
Arts Council of Wales

ARIENNIR GAN  
Y LOTERI  
LOTTERY FUNDED

