



Arts Council of Wales  
**Operational Plan 2019/20**



Cyngor Celfyddydau Cymru  
Arts Council of Wales



Arts Council of Wales is committed to making information available in large print, braille, audio and British Sign Language and will endeavour to provide information in languages other than Welsh or English on request.

Arts Council of Wales operates an equal opportunities policy.



## Foreword

This is the first Operational Plan that we've produced since the publication of our most recent Corporate Plan - "For the Benefit of All..." As its title implies, the Plan re-affirms the importance of ensuring that more people, from the full range of contemporary Welsh society, are able to enjoy and take part in the arts.

This Operational Plan focuses on our two priorities: achieving a more equal approach to reaching wider audiences, and helping artists and arts organisations to become stronger and more resilient. Happily, there's no contradiction between these two priorities. Successful, sustainable arts activity combines imagination and quality with an inclusive recognition of everyone's right to enjoy a rich and diverse cultural life.

We're ambitious for the arts in Wales, but realistic about the challenges we face in these complex and uncertain times. This is why our Operational Plan is practical in its content. It is a one year summary of the work that we must complete to move forward towards meeting our longer term goals.

As a public body, it's important that our work is relevant, engaging and of quality. We must also recognise that it's not something we can do on our own. This is easy to say, but sometimes difficult to deliver. Nevertheless, we're determined to use our best endeavours to find and work with those partners who share our goals.

The Welsh Government's Well-being of Future Generations Act provides the context. And by working together in a collaborative way with our colleagues across the public sector, we'll be more likely to achieve the more prosperous and fair Wales that we all want to see.

Our priorities are real and sincerely meant. Diversity, equality and resilience should not be seen as issues to be handled but rather as fundamental drivers of our creative future. We approach the year ahead with that commitment at the heart of our work.



*Phil George*

Phil George  
Chair, Arts Council of Wales



*Nick Capaldi*

Nick Capaldi  
Chief Executive, Arts Council of Wales



Let's Celebrate! Creative learning through the arts event  
(image: Tom Martin, Wales News Service)

## Contents

Who we are	2
What we do	4
Our vision and strategy	7
Our key programmes of work in 2019/20	10
Being the best we can be	19
<b>Appendices</b>	
1. Financial information	21
2. Arts Portfolio Wales	23
3. Governance Structure	59
4. Welsh Government Remit Letter 2019/20	60

---

## Who we are

We're the country's official funding and development organisation for the arts. Our principal sponsor is the Welsh Government. We also distribute funding from the National Lottery and raise additional money where we can from other public and private sector sources.

Working together with the Welsh Government, we support and promote the important contribution that the arts make to Wales.

We want to foster an environment in which the arts are able to flourish – an environment which identifies and nurtures creative talent, wherever it's found in Wales, to its full potential. Our work is informed by the values that govern our work as a public body. These are the values that guide what we do. They set the standards you should expect from us and the quality of service you can expect of us. They inform the way that we behave – with ourselves and with you.



1

### Being bold and creative

We support the best and most exciting arts that Wales has to offer. By creating an environment in which the arts can flourish, we help artists and arts organisations to make their best work.

2

### Working for everyone

We want as many people as possible to enjoy and take part in the arts, whether in Welsh or English. In a fair and equal Wales we believe that the arts should be widely and easily available to everyone. We're determined to champion the breaking down the barriers that currently prevent this from happening.

3

### Winning the public's trust

As a public body we must be effective and accountable custodians of public funds. We're not reckless with the public's money. We behave with honesty, integrity and fairness. We explain clearly and openly the decisions that we take, and we ensure that the funding investments we make are good value for money.

4

### Being the best we can be

At the heart of any successful organisation are motivated and passionate people. We respect and encourage each other. We approach every day with a positive attitude and a willingness to grow, learn and challenge ourselves. We learn from each other, and from those who we work with. Working together we achieve outcomes that make a difference.

5

### Taking the long view

Many individuals and organisations share our Values. Wales will be a better place if we collaborate and work together, sharing the best of our knowledge and expertise. We're aware of our place in the world, and our responsibility to the planet and to future generations. We work in ways that demonstrate the best in sustainable development and in preventing future harm.

6

### Being proud of what we do

Every day we see important and extraordinary work. The arts bring meaning, authenticity and enjoyment to our everyday lives. They create and sustain jobs, enrich education services, bring people together, improve our quality of life. The arts matter. We will communicate clearly and openly, telling the stories of our achievements.



Take a look at our short animation explaining why **The Arts Matter**

[www.arts.wales](http://www.arts.wales)

## What we do



we support and develop high quality arts activity – we invest public funding, using these funds to create opportunities for people to enjoy and take part in the arts. This includes support for a nation-wide network of important arts organisations – our Arts Portfolio Wales – providing year round access to high quality arts opportunities



we distribute Lottery funds – through applications to our Lottery funding programmes we're able to fund projects that develop new arts activity, supporting individuals, communities and organisations



we provide expert information and advice about the arts – we're the national centre of a network of information and intelligence about the arts in Wales. We also have strong international links in the UK and beyond. Through our Council, our staff and our Arts Associates we have the largest concentration of specialist arts expertise in Wales



we raise the profile of the arts in Wales – we're the national voice for the arts in Wales, promoting the quality, value and importance of the country's artists and arts organisations



we generate more money for the arts economy – we manage initiatives such as *Collectorplan* (our scheme to encourage more people to buy art); we secure European funding to grow the arts in Wales; and we have a presence at international events at home and abroad that open up new markets for Welsh artists



we encourage innovation and experimentation – we promote projects and initiatives that transform the arts in Wales. From our arts education partnership with the Welsh Government (Creative Learning through the Arts) to technological change (Digital Research & Development), we are constantly looking for new ways for people to encounter and discover the arts





we influence planners and decision-makers – the arts take place in many different settings. They can have a dramatic impact on the quality of people’s lives, and the places in which they live and work. The arts are also frequently at the heart of initiatives for economic and social regeneration. Our job is to ensure that the contribution that the arts can make is recognised



we promote small scale performances in local communities – our *Night Out* scheme provides financial incentives to encourage the promotion of high quality arts activity in local community venues across Wales



we conduct all of our activities through the medium of both Welsh and English languages – a responsibility defined in statute.



we develop international opportunities in the arts – through our specialist agency, *Wales Arts International*, we develop partnerships with cultural organisations such as the British Council, we promote internationally the contemporary culture of Wales, and we encourage international exchange and collaboration between artists and arts organisations



# Making the arts central to the life and wellbeing of the nation. Our Vision

# Our Strategy

The basis of our strategy is rooted in the principles of Make: Reach: Sustain.



Simple, yes, but these words are invested with meaning.

We're interested in the way that these meanings fuse together – reinforcing each other in a single sense of purpose. Making art, ensuring it connects and giving it a durable legacy are all part of the same picture.

From creativity rooted locally in the community to the international activity that defines Wales to the rest of the world, the foundations of that creativity lie in all of us.

We're ambitious for the arts in Wales. Our strategy is to build a country in which our best talents are revealed, nurtured and shared; a country in which the widest possible cross section of people in Wales is enabled to enjoy and take part in the arts; a country in which excellent work is valued and sustained. We have two priorities that underpin our vision.

They are:

1

Promoting Equalities as the foundation of a clear commitment to reach more widely and deeply into all communities across Wales

2

Strengthening the Capability and Resilience of the arts, enabling creative talent to thrive

Council has also identified an action to support delivery of these two:

3

Enabling the Arts Council to work more effectively, collaborating more imaginatively with like minded partners across Wales

These priorities inform the delivery of external and internal objectives through a series of more detailed tasks that make up this Operational Plan. Our Values are informed by the five ways of working established in the Welsh Government's well-being legislation: Long term, Prevention, Integration, Collaboration, Involvement. The more detailed tasks are mapped against the seven well-being goals:

- A prosperous Wales:  
**Prosperity** 
- A resilient Wales:  
**Resilience** 
- A healthier Wales:  
**Health** 
- A more equal Wales:  
**Equality** 
- A Wales of more cohesive communities:  
**Community** 
- A Wales of vibrant culture and thriving Welsh Language:  
**Culture** 
- A globally responsible Wales:  
**Global** 

The Welsh Government's expectations of us are set out in an annual Remit Letter. The Remit Letter for 2019/20 sets 4 priority areas of activity (broken down below) for the Welsh Government.

1. United and Connected
2. Ambitious and Learning
3. Prosperous and Secure
4. Healthy and Active

Meeting the priorities in the Remit Letter is a key requirement. These priorities are delivered through the programme of work set out in this Plan.



## Our key programmes of work in 2019/20

### A note of explanation – how we describe what we do

We want this Plan to be readable and accessible. We're a busy organisation engaged in many tasks. However, it's important in a document such as this that we highlight the smaller number of key actions that will most clearly show our progress in delivering our overall goals.

Our programmes of work reflect both Council's priorities and the requirements in our Remit Letter from the Welsh Government. In each area we identify our 3 top actions – 21 in all.

The key actions below describe our higher level outward facing actions. These are the simple statements of intent that set out what we're

trying to achieve. Sitting underneath these are more detailed tasks, all with measurable indicators of success. These include details of our operational management, the essential business, financial and office services that underpin the successful delivery of our goals. This is the essential information that we use internally to drive and manage our work.

At the end of each quarter throughout the year we review progress against our key targets. This is reviewed by our Council and discussed with the Welsh Government.

Our key programmes of work are summarised below.



## Widening Engagement

If we're to increase audiences for the arts, we need to change public perceptions of the arts – how they're made and who they're for. But simply growing the numbers isn't all that we're about, important though this is. It's about reaching out to those who don't yet see themselves as traditional arts audiences. And it's about changing not only how we view public funding for the arts, but about the type of arts that we support. We need to make a shift, doing more to recognise the self expression and cultural interests of individuals and communities – everyday creativity.

Traditional definitions of culture, creativity and the arts can themselves sometimes be barriers to people taking part. We need to make sure our funding supports different kinds of arts, in both Welsh and English, and that it reaches a greater range of artists and communities. We want more people in Wales to be able to choose to make the arts a routine part of their lives.

The arts in Wales will be stronger, more exciting and more relevant if they embrace the inspiration and life experiences of a more diverse cross section of people. The arts still tend to be seen as for the most privileged in society. We want to change this.

Whether attending, taking part or working in the arts as artist, employee or board member, we need to see Wales' wider population represented. We have set specific targets, and these are set out in our Strategic Equality Action Plan.

We're adopting a fundamentally different approach to our work – one where we need to make sure that we're working with the

individuals and communities that we want to engage. There's a well established principle in the field of disability arts that stresses the essential involvement – and visibility – of those we're trying to reach "nothing about us without us". This is a principle that should extend across all areas of our work.

### Our top 3 actions:

1. Complete research undertaken by social enterprise 64 million artists to identify different models of engagement and participation in the arts in Wales through the medium of the Welsh and English languages. We will support a range of projects exploring new ways of reaching audiences who we don't currently connect with.
2. Research, consult on and promote workforce development projects that increase the number of BAME and disabled people able to make work, develop their professional skills and find employment in the arts in Wales. Our goal is to see more people from diverse backgrounds able to work in the arts as creative professionals, as employees, or as members of our Portfolio organisations' Governance structures.
3. Run a public campaign that promotes our commitment to working towards a more equal and inclusive Wales. We want to raise the profile of the ambitions contained in our Strategic Equality Plan in a visible way that attracts attention.

## Resilience and sustainability

We want to encourage the creation of exciting high quality arts. We help to do this by creating a supportive environment in which artists and arts organisations are more likely to prosper – an environment which:

- identifies and nurtures creative talent, wherever it's found in Wales, to its full potential
- supports and celebrates imagination, innovation and ambition
- nurtures creativity through the medium of Welsh and English
- enables artists to develop a professional career in Wales
- equips individuals and organisations with the skills and knowledge to exploit new markets
- is international in outlook

This is a key aspect of our arts development mission. But it's a mission that comes under stress when resources tighten.

We believe absolutely in the importance of public investment in the arts. However, in times of austerity we can't ignore the wider economic context. We continue to do all we can to persuade funding partners to keep faith with the arts. But we must also encourage greater resilience and sustainability: reducing the extent of the arts' dependence on public funding, helping them (and us) to maximise earned income. This is as important for the individual artists as it is for organisations.

Doing this requires strong, entrepreneurial leadership. This means building a sector that's

imaginative, innovative and able to capitalise on its public investment. The best organisations do this already, but we're determined to bring all of our key organisations up to the standard of the best.

A resilient organisation is intimately embedded within the community that it serves and it adopts a business model that can withstand change, whether planned or unexpected. A resilient organisation is one that has the skill, capacity and resources to endure in the longer term.

We have well established ways of addressing the resilience needs of individual organisations on a case by case basis. However, sometimes there are more systemic issues within a sector, even a specific artform. For example, we have a long-standing commitment to encouraging the creation of more work through the medium of Welsh, especially Welsh Language theatre. This is a long-standing area of concern and we're determined to see demonstrable progress this year.

But we have sectoral issues elsewhere. Dance, for example, can point to the very successful achievements of our Portfolio organisations. However, across the piece the position is more fragile. In instances such as these, Resilience will depend on tackling some of the wider strategic issues that are inhibiting progress.



Our top 3 actions:

1. Complete and evaluate the current “Resilience” programme, and develop a successor scheme. This will enable our future work to be aligned to the needs of the sector.
2. Research and identify the actions needed to strengthen key sectors within the arts in Wales. We want to see a strong and resilient infrastructure that confidently promotes opportunities for artists, audiences and participants. We are especially keen to see practical steps taken during the year to address shortcomings in Welsh Language theatre.
3. Understand the current needs of the wider arts sector to inform business development and non public funding initiatives. We will help to identify and grow new financial, digital and physical resources for the arts in Wales.

## Creative Pathways

Fish are only as healthy as the water they swim in. Artists and arts organisations need a supportive environment to prosper. We'll play a clearer and more entrepreneurial role in identifying, nurturing and promoting our country's best creative talent across all kinds of art, and at all stages in the professional development. (Key to this will be achieving a close alignment with action 2 above under "Widening Engagement".)

We know we can provide support at key moments in an artist's career. Whether working singly or together, locally or globally, our goal is to create the circumstances in which our artists are equipped with the skills and the opportunities to pursue viable, sustainable careers from a Welsh base.

Our top 3 actions:

1. Research, develop and promote an inclusive menu of opportunities for individual artists and creative professionals. We want to develop a more comprehensive approach to skills development, from emerging talent to the established professional.
2. Establish partnerships with at least two foundations or specialist providers to increase training, professional development and employability opportunities in the arts and creative sector. We want to work with partners who share our equalities priorities.
3. Look to our National Companies to develop an exemplary programme of internships, apprenticeships and mentoring. We want to see our National Companies as acknowledged leaders in their field.

## Arts and Health

The importance of the Arts for Health and Wellbeing is becoming increasingly accepted. Through project activity that we've previously supported we've been able to demonstrate that Arts and Health work is having a beneficial impact across the full ranges of age, class and geography in Wales.

Our resources are small in relation to Health. This is why we're being clear about where our interventions will have most impact. Key to this is aligning our work with the priorities of Government and the Health Boards and to respond to the challenge of making scalable interventions in key areas of wellbeing and health in the Welsh population. Delivering a partnership approach will be essential if our strategy is to succeed.

### Our top 3 actions:

1. **Build capacity in the Health Boards across Wales.** We will invest in recruitment and support of professional specialists who can promote our Arts and Health priorities.
2. **Commission Y Lab (Nesta and Cardiff University) to work together to understand how arts interventions can play a more prominent role in the health and wellbeing of the people of Wales.** This will help us to better understand where new ideas are needed to make this happen.
3. **Work with partners to implement the recommendations set out in the Mapping Report.** Bringing like minded partners together will increase the likelihood that our ambitions can be realised.

## Young People and Creative Learning

An active engagement with the arts can transform the way children and young people learn and explore the world around them. It can change the way they see themselves – even what they dream of for the future – as well as helping them to develop the self respect and worth that will be such an important part of their life skills for the future. From the youngest age Literacy and Numeracy are seen to underpin academic success.

Success in life depends on more – the integration of Creativity. Our strategy continues to be to pioneer ways in which more schools can draw on practical ways of bringing the excitement and inspiration of the arts into the classroom as embodied in our Creative Learning programme. Creative Learning has challenged Government to place the arts at the heart of the school curriculum. It has challenged the Arts Council to harness the power of the arts to reinvigorate the school day and through ambitious professional development to re ignite the creativity of teachers themselves.

We're equally interested in the disadvantaged and the ignored – those who for whatever reason have become separated from mainstream training and education and who are in danger of falling between the cracks in the current system.

Our approach therefore focuses on two objectives: supporting our young people to develop their creative talents; and, fostering an environment in which that talent can be identified, inspired, nurtured and celebrated.

We want as many young people as possible in Wales to believe that the opportunity is there for them to be the best they can – or want – to be, performing with their peers at the highest level, celebrating and demonstrating their creative talents. Above all else, we want young people to have the opportunity to enjoy and take part in creative activity that they find relevant, contemporary, and exciting.

### Our top 3 actions:

1. Implement the final year of Creative Learning, developing proposals for another phase to take key elements of the programme to 2022. We want to find creative ways of responding to the continued demand for this programme from schools across Wales.
2. Support the development of a new curriculum that places Creativity and the Expressive Arts at its heart. We want to help secure the arts within everyday school life.
3. Embed the involvement of young people in strategies across Council's wider work. We want to see more young people making work, enjoying the arts, and developing the skills that will enable them to contribute to the administration and management of the arts.

## International

Working internationally is key to developing a dynamic and exciting, open and welcoming country with creativity at its heart.

Our arts, our culture and our languages give Wales its unique global personality. And this unique cultural context resonates with many other minority languages and cultures and our story is relatable around the world. This will be a strong feature of our work around the UNESCO Year of Indigenous Languages.

We want to create a new cultural context that nurtures international understanding and tolerance through engaging with the diverse international communities in Wales. It is not enough for us to see international working as an opportunity to 'exploit', we must find ways of giving back and enriching cultural connections. This becomes all the more important in a post Brexit context where we have to re-define our relationship with Europe.

### Our top 3 actions:

1. Assist the Welsh Government with the development and realisation of its international strategy and priorities. We will co-ordinate and draft the content of the strategy's "chapter" on Culture and the Arts and support a Wales-based programme of activity for the UNESCO Year of Indigenous Languages.
2. Implement the actions in the Arts Council's International Strategy. We will assist artists and arts organisations to become "market ready" to take advantage of international opportunities, developing the capacity of Wales' arts sector to engage and participate internationally.
3. Build cultural bridges with international communities living and working in Wales. An international outlook should also help us to better understand and engage with the diverse communities who have made Wales their home.

## Understanding the impact of our investment

Research and evaluation is an essential part of our work. It informs our implementation and monitoring of policy, giving us a better understanding of the impact of our funding and developmental work.

We want more people to enjoy and take part in the arts. We should always be wary of headline numbers, but it remains important that we are able to assess the extent to which the population of Wales is engaging in the arts. This will continue to be an important aspect of our reporting.

We have a small research team, so it will be important that we develop partnerships to extend and enhance our research capability. We currently collect and hold a large amount of data, and we must integrate and share the use of our data to maximise organisational intelligence, reporting and efficiencies.

Our top 3 actions:

1. Publish research that demonstrates the impact of Arts Council investment. We want to be able to assess the performance of our Arts Portfolio Wales and the outcomes achieved by Lottery funding.
2. Publish research which describes the extent and range to which the public in Wales is attending and taking part in the arts. We want to develop a clearer picture of where we need to focus our efforts in developing audiences.
3. Publish more of the data that we collect. We should be doing more to assist artists and arts organisations to better understand who is engaging with their activity.

## Being the best we can be.... ...enabling us as an organisation to succeed

The public rightly demands that the institutions that they fund are efficient and cost effective. And because we're publicly funded, we must be able to demonstrate the benefit that our work delivers, and the extent to which we're making a difference. Over many years we've saved money by simplifying processes, reducing staff numbers and making better use of technology. We're doing this again now.

Our goal is to create an organisation with the arts at its core – first rate in its delivery and sustainable in its cost.

Key internal projects are identified below.

### Financial management

We will:

- establish Anthem Music Fund Wales on an independent sustainable basis
- upgrade our financial management systems and enhance our financial reporting
- provide key financial support and advice in the delivery of our major strategic programmes
- obtain unqualified audit opinion on our two sets of annual statutory accounts

### Grants management

We will:

- upgrade our processes for managing grant applications by implementing a revised online grants management system

### Funding strategy

We will:

- complete the Lottery consultation and re-design funding programmes
- prepare the brief and terms of reference for next Investment Review
- align the Arts Portfolio Wales more closely to the delivery of the Arts Council's corporate priorities

### ICT

We will:

- complete Windows 10 upgrade
- roll out Office 365
- upgrade to SharePoint 2016
- complete a hardware 'refresh' of our ICT and mobile technology

### Communications

We will:

- communicate the Corporate Vision and Council's expectations – internally and externally
- improve our digital presence/capacity through a new website
- embed and deliver our Communications Strategy – internal and external

## Facilities

We will:

- refurbish our Cardiff office to maximise the potential of our reduced office space
- complete remedial work on Carmarthen office

## HR

We will:

- complete the job evaluation of all our posts
- introduce a new pay and grading structure
- research and implement initiatives to diversify our Council membership and staff
- introduce an Apprenticeships programme

## External arts expertise

We will:

- create a viable role for our new cohort of Arts Associates and undertake further recruitment to address any gaps in expertise
- identify new networks of arts partners and collaborators

## Internal Well-being and Culture

We will:

- revise and embed our internal values
- implement a practical, efficient and positive office environment and ways of working
- support continuing development for staff through our Learning and Development Programme



## Appendix 1: Financial information

### Grant in aid

Welsh Government grant in aid supports our Arts Portfolio Wales, Strategic programmes and a proportion of our running costs. Welsh Government funding remains at standstill (£31.582m) for 2019/20.

This is broken down as follows.

	£000	£000
<b>INCOME</b>		
Welsh Government grant in aid		31,582
<b>EXPENDITURE</b>		
Arts Portfolio Wales		26,790
<b>Operating costs:</b>		
Staffing costs	1,293	
Other running costs	558	
Capital	55	1,906
<b>Programme costs:</b>		
Development and staffing costs	1,054	
Available for Strategic programme spending	1,832	2,886
<b>TOTAL EXPENDITURE</b>		<b>31,582</b>

### Lottery

Reductions in the income received from the National Lottery have been a significant concern. In 2018/19 we budgeted to receive £15.6m – a significant reduction in funds compared to the high point in 2014/15 of £19.38m.

Given the performance of Lottery ticket sales during the year, we're projecting a similar level of funding in future years.

	2018/19	2019/20	2020/21	2021/22	2022/23*
£000	15,600	15,650	15,800	15,800	13,167

\* 2022/23 is a 10 month period given that the Lottery licence ends in January 2023.

We are currently consulting on the future use of our Lottery funding. Once this consultation has been completed, we will be publishing our full Lottery budget.

## Arts Portfolio Wales (APW)

Funding remains unchanged from 2018/19 levels (including those Portfolio members funded through Lottery).

	2018/19	2019/20
Grant-in-aid	£26,790,402	£26,790,402
Lottery	£1,750,000	£1,750,000
<b>Total</b>	<b>£28,540,402</b>	<b>£28,540,402</b>

The Lottery figure includes funding to two members of the APW:

Ffilm Cymru Wales	£1,400,000
National Youth Arts Wales	£350,000

Our Arts Portfolio Wales funding commitments for 2019/20 are set out in Appendix 2.

## Appendix 2: Arts Portfolio Wales 2019/20

### Aberystwyth Arts Centre

Aberystwyth Arts Centre was founded in 1972 and forms part of the Aberystwyth University campus at Penglais. The Arts Centre is a major regional venue for the area and provides a wide range of arts activities: drama and music performances, film, dance, craft, contemporary art, literary events and festivals. It also has ancillary facilities such as shops and cafés. It enjoys impressive community support.

The Arts Centre is a registered charity. Its main aim is to 'provide a wide ranging, involving and fully accessible experience of the arts to all sections of the bilingual and bi-cultural community of mid and west Wales'.

The Arts Centre has been awarded two significant Capital Lottery grants for the award-winning schemes, the most recent of which was completed in 2009.

Arts Council of Wales funding £536,645

### Arad Goch

Cwmni Theatr Arad Goch was established in 1989 and it is a company limited by guarantee and a registered charity. The objectives of Cwmni Theatr Arad Goch are: 'Promoting, maintaining and developing the public's awareness through promoting educational drama and activities in the visual arts especially through activity which includes the arts, drama, mime, improvisation, opera, burlesque and literary publications.'

Cwmni Theatr Arad Goch provides theatre for young audiences nationally and the main areas of the theatre's activity is in Ceredigion, Carmarthenshire and Pembrokeshire. The company has strong international connections and arranges the International Theatre Festival for Young People, Open Doors, which is held every two years in Aberystwyth. Cwmni Theatr Arad Goch provides high quality contemporary theatre through the medium of Welsh and English (back-to-back productions) and bilingual workshops. Cwmni Theatr Arad Goch works out of the theatre's renovated offices in Aberystwyth.

Arts Council of Wales funding £346,887

## Artes Mundi Prize

Artes Mundi Prize Ltd is a registered charity and a company limited by guarantee. The organisation was formally established in June 2001 as a biennial contemporary visual arts initiative. It is international in scope, celebrating and recognising artists from across the world. The 'Prize' was awarded for the first time in 2004, with an exhibition at the National Museum and Gallery in Cardiff.

It exists to develop and increase audiences for contemporary visual art through the Artes Mundi exhibition, a commissioning programme, innovative collaborations and a strong media and new media presence.

Apichatpong Weerasethakul won Artes Mundi 8 in 2018. Nominations are currently being sought for Artes Mundi 9.

Arts Council of Wales funding £147,962

## Artis Community Cymuned

Artis Community Cymuned is a professional community arts organisation and registered charity originally set up in 1983. It provides opportunities for taking part in creative processes that enable people to create art works of meaning to their lives and communities. After 25 years at the Park and Dare Theatre, Artis Community Cymuned relocated to offices in Pontypridd in 2009. The work is delivered on an outreach basis across the valleys communities of Rhondda Cynon Taff.

The organisation has a core staff team of practising artists and finance/administrative workers and engages up to 30 outreach freelance artists. Its work spans the areas of community dance (involving 400 participants on a weekly basis), dance in education/training, dance theatre, public/visual art, digital art and combined art projects. Artis is currently leading a project to refurbish the YMCA building in Pontypridd.

Arts Council of Wales funding £199,960

## Arts Alive

Arts Alive Wales is an arts organisation based in Crickhowell, South Powys, established as an educational charity since 1992. Its mission is to enrich the lives of people in the rural and post-industrial communities of Mid and South East Wales through meaningful participation in compelling and high quality contemporary arts and culture. Arts Alive works with professional artists to provide opportunity and experience across our region in activities that engage, inspire and enhance quality of life. The organisation believes that creative expression is fundamental to wellbeing and that participation in the arts can transform lives, particularly for those who are vulnerable.

Arts Alive was a new entrant to the Arts Portfolio Wales in 2016.

Arts Council of Wales funding £77,625

## ArtsCare GofalCelf

ArtsCare GofalCelf (ACGC) is a community arts organisation that has been delivering participative arts programmes across the counties of Carmarthenshire, Pembrokeshire and Ceredigion for over 25 years. It aims to 'facilitate a better life through participation in high quality arts.'

The organisation has particular experience and expertise in working with disadvantaged people and has a unique register of over 140 professional artists in all artforms. Since 2009 ArtsCare has also been funded by the Arts Council of Wales to develop community dance activity in Pembrokeshire and Carmarthenshire.

Broadly, ArtsCare's activity currently falls into four categories which cross over and interact. They are: Arts in Health and Wellbeing; Arts in the Community; Public Arts, Events and Performance and the Professional Development of Artists.

Arts Council of Wales funding £132,915

## Arts Connection / Cyswllt Celf

Arts Connection started life as a co-operative of artists based in Llanfyllin, north Powys, and became a company limited by guarantee in 1994. Working across a range of art forms including the visual arts, music, drama, new media and film, Arts Connection is funded as a community arts organisation working for a wide-ranging selection of communities, across an expansive region of mid and north Wales.

As a community arts organisation Arts Connection provides activities for schools, children, young people, the learning disabled, individuals and communities in general. Partnerships with Powys Youth Service, Powys County Council, Communities First, local health boards, Mid Wales Chamber Orchestra, Welsh National Opera, Theatr Stiwt, Coleg Powys and various other grassroots community groups are evidence of its contribution to arts activity in Powys, Wrexham and the border areas.

Arts Council of Wales funding £65,204

## Ballet Cymru

Established in 1986, Ballet Cymru is a professional ballet company based in Newport. It is a charitable company limited by guarantee. Its vision is 'to establish a national touring chamber ballet that is distinctly Welsh, promotes a positive view of Wales, and excites audiences and participants through creating work that is innovative, inspiring and accessible.'

The company was brought into the portfolio in 2011. Over its long history, it has established itself as a company which seeks to inspire a love of ballet amongst as wide an audience as possible. It is continually seeking out ways to improve how it does this through collaborations, training and creating high quality accessible work (offering venues a choice of a traditional ballet and/or a new work rooted in Welsh culture and tradition).

The company operates from its own specially refurbished premises in Newport.

Arts Council of Wales funding £252,376

## Pontio (Bangor University)

Split over six levels, Pontio is a new arts and innovation centre. The Grimshaw-designed building in the centre of Bangor is home to a flexible mid-scale theatre named after the world-famous bass-baritone Bryn Terfel, a studio theatre which holds up to 120 people, a 200-seater digital cinema, a cutting-edge Innovation Centre and a wide range of facilities for students, including a new home for the Students' Union and numerous learning and teaching spaces.

Pontio offers an eclectic mix of entertainment seven days a week, from the latest film releases to music and drama, gigs, contemporary circus and aerial theatre, cabaret shows and more. Pontio opened in February 2016.

Arts Council of Wales funding £280,118

## BBC National Orchestra of Wales (BBC NOW)

BBC NOW is Wales' only full-time professional symphony orchestra. It is one of the BBC's six Performing Groups and has its home in Hoddinott Hall in the Wales Millennium Centre. The orchestra's antecedents lie in The National Orchestra, founded in 1928. It eventually became the BBC National Orchestra of Wales in 1993.

The orchestra's contract strength is 83 players, with additional players brought in for individual concerts as the needs of repertoire dictate. The Chorus was formed in 1983 and is now one of the UK's leading symphonic choirs with an average strength of around 95 voices.

As well as being one of the BBC's performing ensembles – providing an extensive programme of music for broadcast on BBC Radio 3 – the Orchestra has a busy programme of community and education work. It also provides soundtrack music for film and TV, including for Dr Who.

Arts Council of Wales funding £805,133

## Blackwood Miners Institute

Blackwood Miners' Institute is the only professional venue in the county borough of Caerphilly. Its mission is to be the leading theatre within the South East Valleys, presenting the highest quality professional and community arts and entertainment, creating enriching cultural experiences for a diverse range of audiences and participants.

Blackwood presents a programme of professional arts and entertainment, and is a resource for community and amateur organisations to create and present their own productions. It also provides a wide range of opportunities for people from all sectors of the community to take part in creative activities of their choice. Approximately 200 live events and 300 classes are programmed each year, with annual attendances (performances & workshops) of approximately 34,000 people. The Institute has a main theatre space which seats 400 with flexible seating, a bar space which can also accommodate live performances for up to 250 people, and a dance studio which accommodates 30.

Arts Council of Wales funding £129,375

## Canolfan Gerdd William Mathias

William Mathias Music Centre is a company limited by guarantee and a registered charity. The Centre was established in 1995 and began its work in 1999. Its mission is to 'promote and encourage the provision of musical activity in Wales, particularly through promoting the arts including music in relation to dance, drama, poetry, television and film'. The main work of William Mathias Music Centre is to provide regular voice and instrument tuition to individuals across north Wales.

William Mathias Music Centre is based in Caernarfon, and is one of the organisations who are anchor tenants at Galeri. The centre has been based there since the Galeri opened in February 2005. William Mathias Music Centre became an Arts Council of Wales portfolio member for the first time in 2012 following our Investment Review in 2010.

Arts Council of Wales funding £80,251



## Canolfan Ucheldre Centre

Canolfan Ucheldre Centre is a registered charity and a company limited by guarantee, established in 1991. Its objectives are 'to advance the education of the inhabitants of Holyhead and its surrounding area in all aspects of the performing and visual arts and the development of public appreciation of those arts by the provision of an arts centre and the presentation of public performances and exhibitions'. Based in a converted church, Ucheldre's main activities focus on the central performance area, gallery and shop.

Canolfan Ucheldre offers a balanced and varied programme of arts activity which aims to deliver a high quality arts experience to the community of Holyhead and the surrounding area.

Arts Council of Wales funding £75,235

## Community Music Wales

Community Music Wales (CMW) is a registered charity and company limited by guarantee, which was incorporated in 1990. CMW is an organisation that works nationally. Its primary aim is to contribute to the empowerment of disadvantaged groups and individuals by enabling them to participate in creativity and learning through participation in music-making.

CMW provides a wide range of music activity, including workshops, training and mentoring to communities across Wales. The organisation has a reputation for excellence and currently operates with eight members of staff and around eighty community music tutors and mentors. With offices in Cardiff and Caernarfon it provides a fully bilingual programme of work.

Delivery of grass roots activity centres on participatory music workshops providing opportunities for creative music making to those who live in disadvantaged communities and have little or no access to the arts. The majority of projects target people who are disadvantaged or suffer from social exclusion and aim to improve self-confidence, motivation and self-esteem.

CMW's work is often client led, and engages with groups with specific needs including disabled people, homeless people, those with drug or alcohol problems and young offenders.

Arts Council of Wales funding £105,329

## Chapter (Cardiff) Ltd.

Chapter (Cardiff) Ltd is a company limited by guarantee and a registered charity. It was established in 1971 and its mission statement notes that it is “dedicated to developing contemporary culture, nurturing independent voices and providing public access to the arts.” Chapter exists primarily as a centre for the production and exhibition of contemporary theatre, visual art and film.

Based in an Edwardian school building in Cardiff, Chapter has developed a unique identity and international profile, whilst serving its local audiences with a wide range of innovative and creative performances, events and presentations. The centre receives around 800,000 visits from the general public each year.

Chapter specialises in developing contemporary culture and focuses on nurturing new talent and providing space for experimental approaches to the arts. The organisation has established an international reputation for its work by supporting influential artists early in their careers.

Through its dedication to providing public access to the arts, Chapter is an active and busy hub for a varied range of interests, artists and organisations.

Chapter provides permanent studio, office and workshop spaces for resident companies in a range of art forms – including theatre, dance, carnival, music, visual art, photography and crafts.

Over 300 organisations use the centre, comprising 110 voluntary and community groups, 100 professional cultural producers and more than 45 micro businesses. This represents the largest cluster of cultural businesses in Wales, and Chapter has a strong reputation as a creative ‘incubator’. The centre is home to 30 resident creative companies based in Market House and the main building.

Arts Council of Wales funding £657,391

## Cwmni'r Frân Wen

Cwmni'r Frân Wen's vision is to create theatre that fires the imagination, the mind and the heart and celebrates the wonder of the world. The company aims to make inspiring, exciting and challenging work for children and young people. Cwmni'r Fran Wen, founded in 1984, is based in Menai Bridge, Anglesey, It presents work mainly through the medium of Welsh in schools, theatres, community centres as well as in more unusual locations such as beaches, shops and nightclubs across north west Wales and beyond.

Cwmni'r Frân Wen is principally funded by Arts Council of Wales, Gwynedd Council, Conwy County Borough Council and Anglesey County Council. In addition, Cwmni'r Frân Wen attracts income from European funds, commercial income and private sector sponsorship.

Arts Council of Wales funding £233,013

## Dawns i Bawb

Established in 1988, Dawns i Bawb, a community dance organisation based at Galeri, is a charitable trust. Its aim is to promote the field of dance and related activities. It does this by bringing the work of professional artists to bear on all aspects of community life, by fostering dance education in schools, clubs and other areas of the community, and by providing a platform for performance by professional and amateur groups and companies.

Dawns i Bawb's programme of activity extends across the three counties of north west Wales. During the past few years the organisation has grown significantly. It offers regular high quality community classes and education activities as part of the core artistic programme, covering youth provision, parents and toddlers, older people and adult provision. Working successfully in partnerships to maximise resources, the company caters for all parts of the community.

Arts Council of Wales funding £85,266

## Disability Arts Cymru

Disability Arts Cymru (DAC), formerly Arts Disability Wales, is a registered charity that was established in 1982. The objects of DAC are to 'Advance education in the arts amongst disabled people in Wales by increasing participation in disability arts and other arts activities on equal terms with other members of the community; and promote and advance education in disability arts for the benefit of the public amongst individuals and organisations in Wales.'

Arts Council of Wales funding £165,417

## Ffotogallery

Ffotogallery is the national development agency for lens based media and photography. It is a company limited by guarantee which was established in 1978. Based at Chapter, the organisation delivers a year round exhibition programme at Turner House in Penarth, an extensive education and outreach programme and publications.

Ffotogallery's mission is to, "Develop the practice, enjoyment and understanding of contemporary photography and lens based media, in Wales and beyond...Our aim is to enrich the experiences of audiences and participants through artistic and educational programmes that are distinctive, innovative and stimulating."

In 2015, Ffotogallery successfully managed the Cymru yn Fenis / Wales in Venice project, presenting artist Helen Sears as the Wales featured artist at the Venice Biennale. It also promotes the biennial "Diffusion" Festival in venues around Cardiff.

Arts Council of Wales funding £199,472

## Ffilm Cymru Wales

Ffilm Cymru Wales is the national body for the development of film in Wales, and an external lottery delegate of Arts Council of Wales and the British Film Institute (BFI). It is tasked with developing, implementing and managing film strategy and programmes to develop the business and art of film for Wales; the breadth and depth of film access for Welsh audiences, and the benefits of film education for the Welsh public.

Ffilm Cymru's work spans making, seeing and learning with its main beneficiaries being the Welsh public across all ages, and new, emerging and established Welsh filmmaking professionals from the talent that makes films and the crew and services that facilitate them, to cinemas, festivals and education providers. The majority of its work is Business to Business facing, where it re-grants the majority of its funding to support the development of third parties, growing the film and creative sector, the offer for audiences and learning opportunities. Its beneficiaries include writers, directors, producers and Welsh companies, developing their skills, work and businesses.

Its Wales-based audience development work is focused on enabling opportunities for all people in Wales to access a breadth of quality independent film.

Ffilm Cymru's learning activities centre around enabling the provision of high-quality film and media education that independent research has shown to improve literacy, communication and digital skills, as well as providing tools of social engagement and stimulating pathways to further learning.

Arts Council of Wales funding £1,400,000  
(delegated Lottery funding)

## g39

g39 is a dynamic artist led organisation established in 1998 by artists Anthony Shapland and Chris Brown. Over the last 16 years, g39 has developed as part resource, part gallery and part community showing the work of nearly 700 contemporary artists.

Since relocating in 2011, g39 is now one of the largest spaces exhibiting contemporary visual art in Wales. g39 is committed to 'encourage understanding and awareness of contemporary visual arts' through the exhibition programme. It is also committed to 'show a minimum of 60% of artists of welsh parentage, born in Wales or working in Wales at the time of the exhibition.'

Arts Council of Wales funding £70,220

## Galeri Caernarfon Cyf

Galeri was opened in 2004 and is a vibrant and versatile multipurpose centre providing a varied and quality arts programme for an inclusive and mixed audience. Galeri operates mostly as a presenting venue, but it also commissions, co-produces and co-ordinates touring productions.

Galeri's programme of activity includes opera and musical theatre, classical concerts and world music, recitals and community opera. Galeri has been designated as a dance hub and works to develop and grow its audience in this field. Galeri's programme includes community dance, physical theatre, circus and extravaganzas on a large scale and international contemporary dance. Galeri programmes exhibitions of the visual arts and other activities include poetry and literature, comedy, workshops and participatory activities.

Galeri also screens specialist films and animation projects. Galeri holds a film festival for children and young people. Galeri is also home to a number of creative businesses and cultural institutions including Bara Caws Theatre Company and William Mathias Music Centre. A recently completed capital project has added a new cinema space.

Galeri is a non-profit community enterprise.

Arts Council of Wales funding £316,237

## Glynn Vivian Art Gallery

The Glynn Vivian Art Gallery (GVAG), Swansea's city art gallery, was built to house the original bequest of Richard Glynn Vivian (1835-1910) and opened in 1911. The Grade 2\* listed building was subsequently extended with a modern wing in 1974, which houses the main exhibition space, picture stores and conservation studios.

The Glynn Vivian bequest and subsequent acquisitions of additional historic and contemporary work makes the gallery unique and distinctive in Wales with collections second only, in terms of quality and scale, to the National Museum Wales.

The gallery is registered with the Museums Library and Archives Council as a fully Accredited Museum and has category A security status, which permits it to borrow and exhibit the most prestigious and valuable artworks under the government's national and international indemnity scheme.

Glynn Vivian completed a major Lottery funded refurbishment in 2018.

Arts Council of Wales funding £125,391

## Hafren

Hafren, based on the campus of Coleg Powys in Newtown, is a mid-scale presenting venue, sharing the theatre facility with the college. Originally the management of the theatre was the responsibility of Powys County Council.

But this has now passed to Neath Port Talbot College Group under the terms of a Service Level Agreement. Hafren's catchment area includes the smaller towns and villages of Llanidloes, Rhayader, Llandrindod Wells, western Shrewsbury, Oswestry and Bishops Castle. This is roughly a geographic area of 500 sq miles.

Hafren's programme consists of a mix of drama – classical, new writing and some Welsh Language; dance – ballet and contemporary; music – classical, folk, world, jazz and traditional Welsh language; opera, children's theatre and lectures. The venue also offers more broadly based popular music and entertainment including tribute bands, and comedy events.

Regular slots are also given to local community groups such as Montgomery Federation of Young Farmers, Urdd, Newtown Musical Theatre Company, Montgomeryshire Music Festival, North Powys Youth Orchestra and local primary and secondary schools. Although not a producing house, Hafren is the production base for Mid Wales Opera and Ysgol Theatr Maldwyn.

Arts Council of Wales funding £107,014

## Head 4 Arts (Blaenau Gwent CBC)

Head for Arts is a community arts organisation working across the four counties of the eastern region of the Heads of the Valleys. Established in 2008, it is run by a consortium of four local authorities - Blaenau Gwent, Caerphilly, Merthyr Tydfil and Torfaen.

The organisation develops sustainable arts activities in various communities through a range of participatory arts activities. Arts professionals are employed in a range of disciplines including the visual arts, dance, music and drama, this allows the participants to learn new skills, make new friends or explore their creativity through participation.

The areas in which the organisation is working are primarily focused on regeneration and job creation, so its role is to find ways of engaging people through the arts to raise aspirations and opportunities for the participants.

Arts Council of Wales funding £150,470

## Hijinx Theatre

Hijinx Theatre was established in 1981, a charitable company limited by guarantee, it was incorporated in 1987. It 'aims to create high quality, inclusive theatre that is innovative, empowering and thought provoking'. Based as a resident company at the Wales Millennium Centre, Hijinx's origins are as a pioneering company promoting the inclusion of learning-disabled people and to creating a diversity of opportunities for participation.

A fully professional theatre company, Hijinx tours small scale theatre throughout the UK, Europe and internationally. Hijinx shows always include actors who have learning disabilities. Training actors with learning disabilities to perform at a professional level is also at the heart of the Hijinx mission. The company has established Hijinx Academies, the only professional performance training in Wales for actors with learning disabilities.

Arts Council of Wales funding £155,687



## Jukebox Collective

Jukebox Collective is a creative company focused on the delivery of high quality street dance education, performance and consultancy. Founded on the principle of excellence in street dance being a right for all, its mission is to inspire, create and educate through street dance and hip hop culture, with a particular interest in the training and professional development of young people.

Jukebox celebrates diversity and creativity whilst keeping a keen eye on business and a healthy dose of opportunism.

Jukebox's Artistic Director has a career spanning 20 years in dance with notable success in creating and training the under 16s dance crew from Cardiff – Jukebox Juniors. The Juniors enjoyed considerable TV fame, travelling the world and returning to the Jukebox Studios in Cardiff to pass on their skills.

Jukebox Studios has been running for about 9 years and teaches the foundations of street dance forms, attended by all ages and often attracting harder to reach youth who are perceived to have social and economic barriers to accessing arts and education.

Programmes of work within Cardiff over the years have included outreach to schools such as Willows High and Fitzalan, events such as Ely Carnival and dance education programmes at local Irish traveller sites. Jukebox also delivers a programme of classes in the 3Gs Development Trust in Merthyr.

Jukebox was a new entrant to the Arts Council portfolio in 2016.

Arts Council of Wales funding £167,670

## Literature Wales

Literature Wales is the National Company for the development of literature in Wales. It was established in April 2011 when Academi, the National Literature Promotion Agency and administrator of The Welsh Academy (the national Society of Writers in Wales), was re-launched to include Tŷ Newydd Writers' Centre.

Based in Cardiff, Literature Wales' many current projects and activities include Wales Book of the Year, the National Poet of Wales, Bardd Plant Cymru and Young People's Laureate for Wales, Literary Tourism initiatives, Writers on Tour funding scheme, writing courses at Tŷ Newydd, Translators' House Wales, Services for Writers (including bursaries), Dinefwr Literature Festival, the Cardiff International Poetry Competition, John Tripp Award for Spoken Poetry and Rhys Davies Short Story Competition, and Young People's Writing Squads.

Arts Council of Wales funding £838,264  
(including £96,000 delegated Lottery funding)

## Live Music Now! Wales

Live Music Now (LMN) was founded by Yehudi Menuhin in 1977 with two overarching aims: to make high quality live music as widely accessible as possible; and to support professional musicians at the start of their careers.

LMN musicians perform in a variety of different contexts. However, a particular feature of its activity is to take live performance to non-traditional venues and settings where audiences and participants would not normally have the opportunity to experience such activity.

The organisation works across the UK and has had a dedicated Wales branch since 1990. From its base in Cardiff, LMN delivers its activities by working with committed partners across the whole of Wales.

Arts Council of Wales funding £45,140

## Llantarnam Grange Arts Centre

Llantarnam Grange Arts Centre was founded in 1966 and became an incorporated charity in 1991. Located in a converted Victorian house in an area of parkland near Cwmbran's shopping centre, Llantarnam Grange is building its reputation as the regional centre for the applied arts in south east Wales.

It presents and tours exhibitions by local, national and international artists and makers and provides opportunities to show work by new and emerging practitioners from Wales and further afield. It also delivers an education and participation programme for people of all ages.

Arts Council of Wales funding £85,266

## Mid Wales Opera

Mid Wales Opera (MWO) was established in 1988. It is a charitable trust and company limited by guarantee and is VAT registered. The organisation's aims are 'to educate the public in the Operatic Arts and to further the development of public appreciation and taste for the said Arts.' The organisation is based in Newtown, Powys.

The company delivers a fully staged opera performance accessible to new and/or different audiences to those that can access work by the major companies. It does this by taking mainstream opera repertoire to venues which generally would not otherwise be able to offer this experience.

The company provides employment opportunities for professional musicians and in particular offers opportunities to up-and-coming soloists to gain experience of major roles and to develop this over a number of performances.

Arts Council of Wales funding £104,326

## Mission Gallery

Mission Gallery, formerly St Nicholas Church, was built in 1868 as a non-denominational place of worship for seamen visiting the port of Swansea. In 1977 the building became Swansea Arts Workshop, an artists' initiative managed and run by artists and volunteers.

The gallery has been known as Mission Gallery since 1998. It is based within a designated regeneration area and forms part of a cultural hub of venues within Swansea's Maritime Quarter.

Arts Council of Wales funding £95,298

## MOSTYN

Based in Llandudno, MOSTYN was established in 1901 by Lady Augusta Mostyn. It was built especially to show the work of women artists and is considered to be one of the oldest purpose-built galleries in Wales. However, it was closed with the onset of the war in 1914 and remained so for the following 65 years. Following a campaign led by Kyffin Williams and others, MOSTYN was re-established in 1978, and opened to the public the following year as a gallery of contemporary art. It is a company limited by guarantee and a registered charity.

After acquiring adjoining premises in 2004, MOSTYN was awarded £3m Capital Lottery funding from the Arts Council towards the £5.1m expansion and refurbishment of the building. The project was led by Ellis Williams Architects and the new building provides five exhibition spaces, a hands-on education room, a meeting room, a café, an enlarged retail area and improved public facilities that will make the gallery fully accessible to all. MOSTYN re-opened in May 2010.

Arts Council of Wales funding £389,215

## Music Theatre Wales

Music Theatre Wales (MTW) was established in 1988. A charitable company limited by guarantee, it was incorporated in July 1994. Since then the company has created 30 productions and presented 16 world premieres.

In 2002 it became the first Associate Company of the Royal Opera House to develop a programme of new opera within the Linbury Studio Theatre.

As Wales' leading contemporary opera company MTW is 'dedicated to performing – and touring- masterpieces of the recent past and to commissioning new works from the very best composers and writers – opera which we hope will enter the future repertoire of opera companies around the world.' Generous support from a philanthropic donor has enabled MTW to develop new partnerships, including with Theatr Genedlaethol Cymru, National Dance Company Wales and London Sinfonietta.

Arts Council of Wales funding £218,934

## National Dance Company Wales

The National Dance Company Wales (NDCW) is a charitable trust and company limited by guarantee that was established in August 1984. Based at the Wales Millennium Centre, it is middle-scale repertory dance company which works with established international choreographers.

National Dance Company Wales undertakes the production and touring of dance performances across Wales, the UK and internationally. It also engages in developmental activities such as its Dance Explorer programme and a range of performances, workshops and co-productions within the Dance House.

Arts Council of Wales funding £834,186

## National Theatre Wales

National Theatre Wales (NTW) was created in 2008 with the overall goal of developing and enriching English language theatre in Wales. Conceived as a flexible, non-building based organisation, the company was set up with the aim of offering radical and imaginative theatre choices, both in the selection of plays and in production styles.

From the outset it has sought to redefine what theatre is, and what it can be. The spirit of collaboration and co-operation has underpinned much of its work as it focuses on the commissioning of new work, brokering relationships between playwrights, directors, companies and theatres, identifying and nurturing talent.

NTW is based in Cardiff and works extensively throughout Wales.

Arts Council of Wales funding £1,606,405

## National Youth Arts Wales

National Youth Arts Wales (NYAW) provides training and performance opportunities across the disciplines of dance, music and theatre - through the National Youth Brass Band, Choirs, Dance, Jazz, Orchestra, Theatre and Wind Orchestra of Wales - leading to performances at the highest level in locations within Wales, UK and internationally.

Although it has an office-base in Cardiff, NYAW draws its members from across Wales and seeks to have a presence each year in north, mid, south and west Wales via both participatory activities and public concerts/performances.

NYAW nurtures creative partnerships that offer greater opportunities for the young people in Wales.

Arts Council of Wales funding £350,000  
(APW Lottery Funding)

## New Dance

Based at Llangollen Pavilion, NEW Dance (formerly North East Wales Dance) was set up initially in 1998. Its vision is to be a beacon of excellence for the growing dance community in north east Wales and beyond, setting the standard for and pioneering new work in dance in educational and community settings.

NEW Dance aims to pioneer creative and innovative dance work which improves the social and cultural well-being of communities across north-east Wales. It is also committed to strengthening the professional dance infrastructure in the region.

Arts Council of Wales funding £75,523

## NoFit State Circus

Founded in 1986, NoFit State Circus is a contemporary circus theatre company. Based in Cardiff, NoFit State Circus presents medium and large scale professional touring productions; an extensive community arts programme (including community workshops and residencies); medium and large scale mixed media community productions; and a professional development programme. NoFit State typically stages approximately 20 performances in Wales and 80-100 performances in other countries. The company is also revenue funded by Arts Council England.

Arts Council of Wales funding £194,608

## Oriel Davies Gallery

Originally known as Oriel 31, it was established as a Company Limited by Guarantee and registered charity in 1982. Based in Newtown, Oriel Davies is the principal contemporary visual arts venue for mid Wales. It comprises two main exhibition galleries and a small project space, a small interior gallery TestBed, a café, a shop and dedicated education facilities.

Oriel Davies' stated vision is "to inspire, excite, engage, challenge and educate through innovative contemporary visual art." The gallery presents an annual programme of between 5 and 7 major exhibitions showcasing the best contemporary art being produced in Wales. There is a clear emphasis on providing major solo shows and commission opportunities for young and emerging Wales based artists, and to bring to Wales some of the most important and interesting work by international artists.

Arts Council of Wales funding £223,798

## Oriel Myrddin Trust

Oriel Myrddin is a registered charity and trust managed by Carmarthenshire County Council from which it receives financial and administrative support. Located in a red brick Victorian building in the centre of Carmarthen, Oriel Myrddin Gallery was launched in 1991.

The gallery exhibits the contemporary visual arts, craft, applied art and design. Its programmes include artists and makers from Wales, UK, and internationally which then links in with the Education and Community Programme. The gallery also operates a specialist contemporary craft retail space selling work from artists and makers from Wales and beyond.

Arts Council of Wales funding £47,147



## Pontardawe Arts Centre

Pontardawe Arts Centre comprises a 450 seat Victorian theatre/cinema, an attic gallery, a teaching studio and a meeting room/bar. Since its opening in 1996 the Centre has followed a broad remit to deliver opportunities for engagement in the arts to improve the range and quality of cultural opportunities within the Neath and Port Talbot County Borough.

Joint programming with the other two venues within the Local Authority (the Gwyn Hall and the Princess Royal Theatre) has resulted in the Arts Centre developing a distinctive programme. This aims to deliver 60/70 professional shows a year encompassing drama, dance, comedy, world, folk and classical music, children's theatre, a programme of 60 mainstream and specialist films, amateur shows, visual arts exhibitions, cross-art form classes and workshops and an outreach programme extending across the County Borough.

Arts Council of Wales funding £63,197

## Powys Dance

First established in 1979 as a dance-in-education service for the county, Powys Dance is a professional dance company promoting participatory dance activity throughout the county. Based at The Dance Centre in Llandrindod Wells, it works with a wide cross section of the population of all ages and abilities in educational and community settings.

It has a core remit to deliver dance in education activity for schools in Powys, but over the years its portfolio has developed to include community based participatory projects, dance with learning disabled people, promotion and delivery of dance through the medium of Welsh, the creation of touring products for audiences and training and professional development for dance practitioners and tutors.

Arts Council of Wales funding £112,602

## Rhondda Cynon Taf County Borough Council

Rhondda Cynon Tâf Theatres comprises the Park & Dare Theatre, Treorchy, and the Coliseum, Aberdare. These two venues are run from within RCTCBC's Cultural Services team. Rhondda Cynon Tâf Theatres' programme is broad in its scope, with music, drama, opera, comedy and dance all represented.

A strong audience for folk/roots music has been developed and the venues also programme a range of Welsh/Celtic music acts. Rhondda Cynon Tâf Theatres also work in partnership with a range of companies and other venues on co-productions. The Take pART programme offers a range of participatory opportunities to complement the live programming and runs a range of workshops in dance, drama, film, music and multi-artform activity at the three venues.

Arts Council of Wales funding £150,821

## Rubicon Dance

Rubicon is the community dance development organisation for Cardiff and Newport. Starting out life in 1976 as the Cardiff Community Dance Project based at the Sherman Theatre, by 1983 the organisation was based at its own dance centre in Adamsdown, Cardiff. Rubicon is a registered Charity and Company Limited by Guarantee.

Rubicon's community dance development programme is one of the most comprehensive in the UK, engaging with the community at all levels.

The organisation runs a substantial building-based programme in addition to its extensive development programmes in schools and community settings across Cardiff and Newport. It also fulfils an important role as a trainer of teachers (through its mentoring of teachers via the PESS programme and its apprenticeship scheme) and of aspiring young dance talent.

Arts Council of Wales funding £194,608

## Ruthin Craft Centre

Ruthin Craft Centre (RCC) is administered by Denbighshire County Council. RCC stands as the national centre for the applied arts in Wales; with three galleries, three artists' studios, a retail gallery, education and residency workshops, tourist information gateway and a café with a courtyard terrace.

The bold and innovative annual programme of exhibitions is presented broadly in a pattern of 5 'slots' of up to 3 shows - each with a corresponding Outreach Education Programme.

The programme aims to challenge the public perception of craft and investigate the quality of contemporary craftsmanship at a time when boundaries are being pushed. Audience numbers at RCC have held their own with around 98,000 visitors per annum.

Arts Council of Wales funding £389,215

## Sherman Theatre

Sherman Theatre was incorporated as a Limited Company with Charitable Objectives in November 2006.

Sherman Theatre operates as a production company working in both English and Welsh with a particular remit for the development and presentation of new writing. It also runs the Sherman Theatre building - a leading arts venue for the performing arts in Cardiff and Wales. In conjunction with these two roles, the company runs a significant outreach and participation programme.

The Sherman houses two auditoria - the main house/Venue 1 with a seating capacity of 460 and the studio/Venue 2 which is licensed for 200 but generally is configured to seat 125. In 2018 Sherman Theatre was the recipient of a prestigious Olivier Award.

Arts Council of Wales funding £1,125,997

## Sinfonia Cymru

Established in 1996, Sinfonia Cymru is a charitable company limited by guarantee. It supports an ensemble of talented young musicians and is committed to touring to areas of rural Wales that wouldn't usually receive live orchestral performances.

Sinfonia Cymru is building and strengthening its partnerships with many other leading arts organisations throughout Wales. One of the most important partnerships is with the Royal Welsh College of Music and Drama, where Sinfonia Cymru supports the development of orchestral students, offering linked bursaries and early professional performance opportunities.

The orchestra's core touring remit consists of four consecutive concerts with associated activity. Alongside core venues in Cardiff (Dora Stoutzker Hall, Royal Welsh College of Music and Drama), Newport (The Riverfront) and Pontyberem (Memorial Hall, Carmarthenshire), the orchestra has also toured widely across Wales visiting Gwynedd, Powys, Flintshire, Denbighshire, Ceredigion and Pembrokeshire.

Arts Council of Wales funding £217,825

## Taliesin Arts Centre

Established in 1984, Taliesin Arts Centre is located on the campus (and operates as a department) of Swansea University. The centre has a strong artistic reputation and presents a mixed and varied programme promoting dance, jazz and world music alongside art house and world cinema. It is acknowledged as a regional centre of excellence and Dance Hub.

As well as being a presenting house for the performance arts, Taliesin is now co-producing work and has developed strong relationships and partnerships with production companies such as Volcano, National and Theatre Wales. As part of the Dylan Thomas 100 celebrations, Taliesin commissioned John Metcalf to write 'Under Milk Wood – The Opera'. And in 2018 Taliesin co-produced Marc Rees' "Now the Hero" as part of the 14-18 NOW commemorations

Arts Council of Wales funding £219,906

## The Riverfront

Opened in October 2004, The Riverfront Theatre and Arts Centre is Newport's only professional presenting theatre. It has a 494 seat auditorium, a 128 seat studio theatre, a gallery, a dance studio, recording studio, three workshop rooms, a conference room and a cafe.

Owned and managed by Newport City Council, the building was funded by the local authority and the Arts Council of Wales, with additional funding from the Welsh Government.

Primarily a presenting theatre, The Riverfront also aims to co-produce at least two drama, physical theatre and dance productions each year.

A number of Wales based companies have benefitted from the ongoing support, rehearsal space and resources of the venue. They include Citrus Arts, Ballet Cymru, No Fit State Circus and Sinfonia Cymru.

Arts Council of Wales funding £125,391

## Theatr Bara Caws

Theatr Bara Caws was founded over thirty years ago to meet the requirement for professional Theatre in the Welsh community, for the Welsh community. It is now the oldest professional community theatre company working through the medium of Welsh.

The Company is located in a unit on the Cibyn Industrial Estate. The unit includes a rehearsal room, a workshop and an office. On average, the company tours a production for at least four weeks, performing about 25 times in about 20 different locations.

Arts Council of Wales funding £279,803

## Theatr Brycheiniog

Theatr Brycheiniog opened in 1997. It is a purpose-built theatre with a main auditorium seating up to 477 seated or 600 standing, a studio space with a capacity of 120, a gallery, bar and café.

The organisation is a company limited by guarantee and a registered charity that exists to 'encourage the knowledge, enjoyment and understanding of the arts through the promotion of theatrical events and other arts activities'.

Arts Council of Wales funding £194,608

## Theatr Clwyd

Clwyd Theatr Cymru (CTC), was formed in 1976 under Clwyd County Council. After unitary local authority changes, its governing body changed to Flintshire County Council. It is a major Arts Council revenue funded client, renowned for the quality of its theatre and drama programme.

The company stages an average of eight in-house productions a year, some of which tour, mostly within Wales. In-house production is complemented by a wide-ranging visiting programme of drama, dance, classical music, comedy and family shows, playing across two live stages. Clwyd Theatr Cymru operates a studio cinema, three galleries, a restaurant and bars and several function rooms. It also includes innovative and well regarded Theatre for Young People activity as part of the company.

The education department delivers a programme of weekly and holiday workshops, a social inclusion programme, and a separately funded Theatre for Young People.

In 2019, Theatr Clwyn won a prestigious Olivier theatre award.

Arts Council of Wales funding £1,802,969

## Theatr Felinfach

Theatr Felin-fach was established in 1972 by the Education Department of Cardigan County Council. The creation of the theatre reflected the cultural ambition of this rural community in West Wales and so has a strong engagement with the local community. The theatre operates 'in the areas of education and community development through the performing arts and the mass media throughout rural Wales (with specific relevance to the areas where Welsh is the main cultural language)'. Programming arts events therefore is only one aspect of a development role that encompasses protecting and developing the creative community and harnessing the latent creativity which is an essential part of Welsh-speaking communities.

Arts Council of Wales funding £60,188

## Theatr Genedlaethol Cymru

Theatr Genedlaethol Cymru was established and incorporated in 2003, to fulfil the need for a Welsh-language theatre company. The company is based in Y Llwyfan, Carmarthen. The company's brief is to present a variety of theatre productions with a wide appeal which enrich Wales' theatrical culture including mainstream productions of classic Welsh-language plays; stage adaptations of Welsh-language literary classics, translations and adaptations of classic international plays; new plays commissioned and developed by the company; site specific productions in various locations and venues; and community and participatory theatre projects.

In 2016 the company presented Chwalfa as the opening production at Pontio.

Arts Council of Wales funding £1,029,567

## Theatr lolo

Theatr lolo was formed in July 1987 and is a company limited by guarantee and a registered charity. An internationally-renowned theatre company based in Cardiff, Theatr lolo makes theatre for all ages and performs all over Wales and internationally. It is a company committed to creating the best theatre for children, young people and their families.

Arts Council of Wales funding £256,749

## Theatr Mwldan

Theatr Mwldan is a registered charity and a company limited by guarantee based in Cardigan. The present company structure was established in 1992. Its objects are 'to promote the advancement and improvement of general education in relation to all aspects of the arts and drama, theatre, music, dance and film; the public appreciation thereof through the medium of both the English and Welsh languages; to present, research, produce, promote, organise, manage and conduct such performances, productions, events, exhibitions, publications, educational activities, or other arts activities as the company may from time to time think fit'.

Following an extensive programme of capital development the venue has two auditoria, a dedicated cinema gallery, meeting rooms, cafe and bar.

Theatr Mwldan offers a good quality mixed programme of live performances and also has an extensive programme of film.

Arts Council of Wales funding £267,880



## Theatr na n'Óg

Established in 1982, Theatr na n'Óg produces theatre for a wide range of audiences throughout Wales in a variety of venues and locations in both languages. It is a charitable company limited by guarantee.

The literal translation of Theatr na n'Óg is theatre of eternal youth and this encapsulates the ethos of the company to create theatre that has the power to excite and engage audiences of all ages.

The current artistic programme has three main areas: Productions for young audiences; Main stage, Family, and Community Productions (co-producing with many leading venues in Wales and further afield); and more recently, the development of Creative and Interactive Digital Media projects which provide a digital afterlife for live work including on-line streaming and educational resources.

Arts Council of Wales funding £316,092

## Torch Theatre Company

The Torch Theatre Company (TTC) is a registered charity and a company limited by guarantee that was established in 1977. It comprises a 295 seat auditorium, a 102 seat studio theatre, an art gallery, bar facilities and a café.

As both a presenting venue and production house, the Torch delivers a comprehensive and varied programme, consisting of in-house and visiting theatre productions. There are wide ranging programmes of music and film which include live screenings of opera and theatre. The Torch is also home to a youth theatre and the company undertakes education work in schools and colleges. It supports amateur theatre and delivers a modest contemporary exhibition programme.

Arts Council of Wales funding £447,598

## trac - Music Traditions Wales

Established in 1997, trac is Wales' folk and traditional music development organisation. trac is a company limited by guarantee and a registered charity. Its role is to promote and develop the music and dance traditions of Wales. The organisation works strategically with the sector to develop and provide projects for public participation in traditional music and dance. It also undertakes promotion and advocacy and provides information services and networking opportunities.

trac has a national remit operating locally with community-based projects. Nationally its work focuses on advocacy and strategic development, and internationally, representing traditional music from Wales in global networks.

Arts Council of Wales funding £80,251

## Tŷ Cerdd

A Charitable Incorporated Organisation, Tŷ Cerdd is based at the Wales Millennium Centre. It aims to develop and promote the creation and performance of music both within Wales and further afield.

In 1997 it brought together the Welsh Music Information Centre and the Welsh Amateur Music Federation in partnership to improve the promotion of Welsh music.

In delivering its mission, Tŷ Cerdd works across a number of disciplines, engaging with numerous community music making organisations across Wales, with a particular focus on choirs, orchestras, societies, brass bands and composers.

Arts Council of Wales funding £284,525  
(including £80,000 delegated Lottery Funding)

## Valley & Vale Community Arts Ltd.

Valley and Vale Community Arts is based in a converted chapel in the ex mining village and Communities First area of Betws, near Bridgend. Formed in the early 1980s, it seeks to bring people together within groups and within communities who are often marginalised, vulnerable or at risk, working inclusively throughout the county of Bridgend, and further afield.

Valley and Vale's staff and extended family of freelance arts facilitators assist participants in realising their potential and creating opportunities for change through the creative process. Valley and Vale creates partnerships with many kinds of organisations in the public, voluntary and community sectors, including health, education, criminal justice and social inclusion sectors.

Arts Council of Wales funding £175,147

## Valleys Kids

Based at Penygraig in the Rhondda, Valleys Kids is a registered charity with a long track record of working with disadvantaged children and families. For more than 30 years, it has worked with people living in valleys communities, empowering them to change their lives for the better.

Arts Council of Wales funding contributes towards, ArtWorks, a vibrant and transformational Youth Arts project which is an important strand of Valleys Kids' work. It delivers a range of arts activities, with an emphasis on theatre and drama work, for young people aged between 8 and 25.

As well as having its own dedicated team of youth arts workers, it also works in partnership with the youth and community staff at Valleys Kids. Artworks targets the most vulnerable and marginalised young people and works with a range of partner organisations to make sure that young people have the best possible access to its services.

Arts Council of Wales funding £122,383

## Volcano Theatre Company Ltd.

Volcano Theatre Company is incorporated under the Companies Act 1985 as a private company limited by guarantee. Although primarily recognised for its physical theatre, the company produces a variety of work – adaptations of classics, original devised pieces, new plays and site specific events.

Volcano produces work with a particular urgency and immediacy, unafraid to shock or to challenge. Its work strives to address some of the most pressing, intractable issues of today – environmental, political and social. From its home at High Street, Swansea, Volcano has continued to contribute in innovative ways to the discussion, presentation and understanding of art in the public realm.

Arts Council of Wales funding £209,204

## Welsh National Opera

Welsh National Opera (WNO) was established in 1946, later incorporated in 1948, and is a registered charity. Its objectives are to stage and tour opera from its home in the Wales Millennium Centre, throughout Wales and England.

It delivers around 46 performances in three venues across Wales and tours to a further ten venues in England. The company is funded by both Arts Councils in Wales and England.

The company also delivers a range of educational and community activity through its award winning WNO MAX programme, in addition to performing concerts and recordings. Around 212 people are permanently employed by the company which has an annual turnover of around £17m.

Arts Council of Wales funding £4,533,977

## Wales Millennium Centre

Wales Millennium Centre (WMC) opened in 2004. It is now a significant and well established cultural organisation that continues to extend the range and the quality of its artistic activities.

The Centre attracts an annual audience of around 400,000 for both ticketed and free performances. It also attracts in excess of one million casual visitors every year, making the WMC Wales's top visitor attraction and one of the UK's top cultural attractions outside London. The vision of the Centre is to be an internationally significant cultural landmark and centre for the performing arts.

Wales Millennium Centre supports some 1,000 jobs on site and is home to eight creative companies, four of which are national companies, Welsh National Opera, BBC National Orchestra of Wales, National Dance Company Wales and Llenyddiaeth Cymru– Literature Wales.

The other four resident companies are Hijinx Theatre Company, Touch Trust, Tŷ Cerdd and Urdd Gobaith Cymru.

WMC has two theatres, the 1,900 seat Donald Gordon Theatre, and the 250 seat Weston Studio. The Donald Gordon lyric theatre is principally programmed for opera, dance, both classical and contemporary, circus, musical theatre, some drama and comedy. It provides the Cardiff home base for performances by Welsh National Opera.

Arts Council of Wales funding £3,537,917 (revenue)  
£300,000 (capital)

## Ystradgynlais Miners' Welfare

---

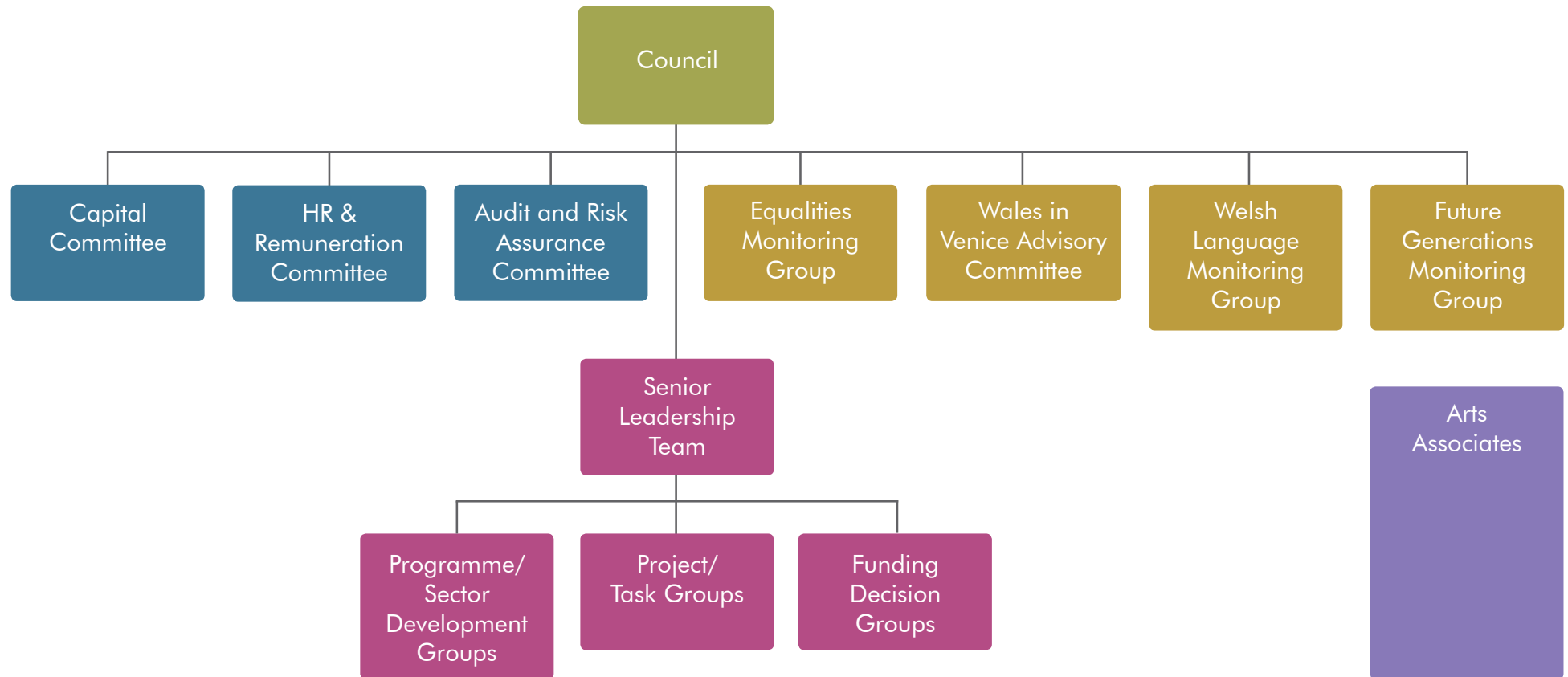
Ystradgynlais Miners' Welfare is a new entry to the Portfolio for 2016. It was originally built in 1934 by contributions of a penny a week from local mine workers to create a centre of learning, leisure, recreation and development.


Today it is a community and arts venue, with cinema, theatre and function hire facilities. It strives to maintain an arts, entertainment and participatory arts programme as well as provide a general community resource for the area, attracting around 40,000 attendances to the cinema, theatre, participatory arts workshops as well as community or private functions.

---

Arts Council of Wales funding £41,609

## Appendix 3: Governance Structure



 Council Sub-Committee

 Advisory Committee

 Staff project/Task Group

## Appendix 4: Remit Letter 2019

Yr Arglwydd Elis-Thomas AC/AM  
Y Dirprwy Weinidog Diwylliant, Chwaraeon a Thwristiaeth  
Deputy Minister for Culture, Sport and Tourism



Dr Phil George  
Chair  
Arts Council of Wales  
Bute Place  
Cardiff  
CF10 5AL

26 March 2019

Dear Phil,

I would like to start by congratulating you on another successful year for the Arts Council of Wales in 2018-19. Your achievements, included:

- the continued progress of *Creative Learning through the Arts*, including the National Creative Learning Festival and the showcasing of 32 schools at the Tate in London
- your continued success in extending Arts and Health initiatives, and the signing of a joint action plan with the Welsh NHS Confederation
- the hugely successful 'Year of Wales' at the Lorient Festival in August
- the launch of your International Strategy
- the opening of Tŷ Pawb as a community cultural centre in Wrexham
- the success of Horizons Live, exemplified by Alffa's success at becoming the first Welsh language act to hit 1million streams on Spotify
- the formal establishment of Anthem, the Music Endowment Fund for Wales.

I also commend the successes of the many organisations you supported during the past year, which have included:

- *Home, I'm Darling* and *The Assassination of Katie Hopkins* by Theatr Clwyd
- *Nyrsys* by Theatr Genedlaethol Cymru
- The Olivier Award for the Sherman Theatre
- Artes Mundi 8
- The BBC National Orchestra of Wales tour to China
- Hijinx Theatre's success in winning The Stage's International Award
- The National Dance Company's successful tour to Germany and Switzerland.

I look forward to work of this kind continuing, during the year to come and beyond.

You will be aware of the Welsh Government's desire to see partnerships with sponsored bodies moving towards a Term of Government remit. Within that context, I would like you to consider this letter as the basis for our relationship until the end of the current Term of Government in 2021.

I respect your charitable and Royal Charter status, and the need for the Arts Council of Wales to act independently on a day-to-day basis and in the individual funding decisions

Bae Caerdydd • Cardiff Bay  
Caerdydd • Cardiff  
CF99 1NA

Canolfan Cyswllt Cyntaf / First Point of Contact Centre:  
0300 0604400  
[Gohebiaeth.Dafydd.Elis-Thomas@llyw.cymru](mailto:Gohebiaeth.Dafydd.Elis-Thomas@llyw.cymru)  
[Correspondence.Dafydd.Elis-Thomas@gov.wales](mailto:Correspondence.Dafydd.Elis-Thomas@gov.wales)



that the Council takes. However, as a Welsh Government Sponsored Body, the Arts Council's aims should reflect Welsh Government policies. This letter sets out a number of priorities that I would like you to consider when preparing your Operational Plan for 2019-20 and in subsequent years.

#### Priorities

In addition to its core work, as laid out in its Charter, my priority areas for you in the next few years are set out in Annex 1. Annex 2 confirms the level of Grant-in-Aid funding that the Welsh Government will provide to you in 2019-20. Figures for 2020-21 and 2021-22 will be provided in due course.

The strategic context for our work in the years ahead is similar to 2018-19. Relevant Government strategies including 'Prosperity for All', 'Light springs through the dark', the Well-being of Future Generations (Wales) Act and our Economic Action Plan – all set out a clear framework for working that should be integrated into your Operational Plan.

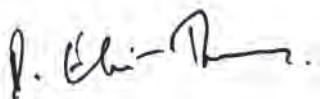
An important recent development is the decision by my colleague Eluned Morgan, the Minister for International Relations and Welsh Language, to develop a new strategy for International Engagement. The Minister has made it clear that she expects the Arts Council, through the work of its international team Wales Arts International, to play an important part in the development of this strategy. Whatever the outcome of the negotiations over the UK's departure from the European Union, Wales will not turn its back on the world and on our closest neighbours in the EU. In this context, the arts sector has a key role in helping to promote Wales, and in generating new economic and cultural opportunities.

I also note the renewed emphasis in your Corporate Plan *'For the Benefit of All'* on equalities and the importance of reaching and engaging a wider constituency with your work, whether that be as audiences or participants. I welcome this commitment. Like you, we feel that too many communities in Wales are prevented from enjoying and taking part in the arts. Within the context of the Future Generations legislation, I would expect that your approach to inclusive engagement and participation is specific and clear.

These themes should be reflected within your draft Operational Plan, which the Welsh Government should receive from you as soon as possible, in order for the relevant goals, targets and performance indicators within the plan to be approved.

I believe that we have successfully established a positive relationship based on mutual trust and respect, and open and honest communication. I look forward to this continuing and to learning more from your Operational Plan about your work in the years ahead.

Yours sincerely,



**Yr Arglwydd Elis-Thomas AC/AM**

Y Dirprwy Weinidog Diwylliant, Chwaraeon a Thwristiaeth  
Deputy Minister for Culture, Sport and Tourism

## Annex 1: Key Deliverables

### 1. United and Connected

*“Our aim is to build a nation where people take pride in their communities, in the Welsh identity and language, and our place in the world.”*

Our cultural institutions have the ability to help and empower people from all backgrounds to participate in cultural life, and to support the creation of cohesive communities. I would like the Arts Council to:

- Continue to ensure that our investment enables even more people to actively participate in the arts, and tackle the barriers that inhibit this.
- Continue to support open access to cultural opportunities for young people.
- Continue to encourage and grow the arts sector’s involvement in ‘*Fusion*’ *Creating opportunities through culture*, and if possible, support us to enhance the scale and reach of this programme.
- Encourage local authorities to maintain their support for local arts services, projects and venues, and for national initiatives like the national youth ensembles.
- Continue to develop and promote the arts in and through the Welsh language.
- Promote the role of the arts in supporting place-based regeneration, including opportunities to support major projects such as the Cardiff Capital and Swansea Bay city regions.

The Arts Council has a key role in helping Wales to become a more creatively active nation, by providing access to cultural opportunities for people from all backgrounds. I would like you to:

- Encourage and increase participation in arts activities from the broadest range of diverse audiences, and encourage arts organisations to increase the level of engagement in their work by minority communities and by disadvantaged groups.
- Support the ongoing feasibility work into the possible creation of a National Gallery for Contemporary Art.
- Continue to advocate for local authorities to support music education, and where possible help to deliver the recommendations of the "*Hitting The Right Note: Inquiry Into Funding For And Access To Music Education*."

The Arts Council also has an important role to play in showcasing our vibrant culture and language to an **international** audience, and in helping the arts sector to develop new markets. I would like you to:

- Work with arts and international relations officials to inform the new Welsh Government strategy for International Engagement, in particular on ways in which the arts sector can help to promote Wales, and exploit economic opportunities overseas.

- Maintain and develop your existing international links, including those within the EU and in India; helping us to ensure that Wales is properly represented in relevant UK-wide cultural initiatives overseas.
- Continue to support the implementation of the Welsh Government's cultural memorandum of understanding with China
- Contribute to UNESCO Year of Indigenous Languages

## **2. Ambitious and Learning**

*"Our aim is to instil in everyone a passion to learn throughout their lives"*

Cultural institutions can widen people's horizons and lift their aspirations, offering both formal and informal learning opportunities. You have an important role in supporting young people to make the most of their potential and to encourage 'learning for life'. I would like you to:

- Support young people to make the most of their potential and encourage learning for life, by continuing to lead the successful *Creative Learning through the Arts* initiative, and by helping to develop the new Curriculum for Wales, in particular the 'Expressive Arts' Area of Learning and Experience (AoLE).
- Continue to support the development of 'Anthem – Music Fund Wales', to help this new organisation to become fully effective.

## **Prosperous and Secure**

*"Our aim is a Welsh economy which delivers individual and national prosperity while spreading opportunity and tackling inequality..."*

The arts have a significant role to play in supporting people and businesses to drive prosperity. Therefore I would encourage you to work with other organisations, including Careers Wales and Creative and Cultural Skills to improve career pathways and address specialist skills requirements within the arts sector. I would like you to:

- Abide by the principles within our *Economic Contract*, of inclusive growth, fair work, health and skills in the workplace and the management of carbon footprints. The Economic Contract forms part of our Economic Action Plan, and is an important means through which we will deliver public investment with a social purpose.
- Collaborate with relevant partners to promote the careers available in the arts, and to develop more apprenticeships, traineeships and mentoring opportunities.
- Continue to develop 'Resilience' and other tailored advice services, to help your revenue clients, and if possible others, to improve their business and marketing skills, and good practice in governance.
- Continue work to increase funding from external sources to reduce the arts sector's reliance on public subsidy, including Welsh Government Grant-in-Aid. As part of this, work with Welsh Government officials and other partners to implement the recommendations within the National Assembly's Inquiry report on '*Non-public funding of the arts*'.

## **Healthy and Active**

*“Our aim is to improve health and wellbeing in Wales, for individuals, families and communities... and to shift our approach from wellbeing to prevention”.*

The arts sector can support wider efforts to create the right conditions for better health, well-being and greater physical activity and increase social inclusion by offering opportunities for older people and people with physical and mental health conditions to engage in cultural activities. I would like you to:

- Build on the Arts in Health in Wales Mapping Study, by working in partnership with Welsh Government, Public Health Wales, the NHS Confederation and the arts sector to (i) improve the evidence base for ‘arts in health’ interventions, and (ii) scale-up those interventions that are proven to be effective in improving people’s health and wellbeing.
- Contribute towards the cross-cutting priority of ‘better mental health’ by supporting Welsh Government and Health Boards with social prescribing and other relevant initiatives.

## **Annex 2: Financial support**

The Welsh Government will provide the following Grant-in-Aid funding to the Arts Council of Wales in 2019-20 to deliver the priorities outlined in this letter. Planned figures are also provided for 2020-21 (Capital only). Funding levels for future years will be confirmed during the Welsh Government's usual annual Budget process.

### **Expenditure**

<b>THE ARTS COUNCIL</b>	<b>Budget 2019-20 £'000</b>	<b>Plan 2020-21 £'000</b>
Revenue - Current Expenditure / Running Costs	31,227	-
Non Cash - Depreciation*	119	-
Capital Expenditure**	355	355
<b>Total</b>	<b>31,701</b>	<b>355</b>

The breakdown between expenditure and running costs is to be confirmed.

\* This is a non cash item and is not available for draw down in the course of the year

\*\* Ring-fenced within Capital Expenditure: £300,000 for the Wales Millennium Centre

### **TOTAL Grant-In-Aid 2019/20**

<b>£31,701,000</b>
--------------------

### **Terms and Conditions of Grant-in-Aid funding:**

The Arts Council of Wales' funding agreement with the Welsh Government (the Framework Document) sets out the details of the sponsorship relationship and the terms and conditions under which the Welsh Government provides Grant-in-Aid funding to the Arts Council as a Welsh Government Sponsored Body. Grant-in-Aid funding is provided to the Arts Council under Section 61 of the Government of Wales Act 2006.

The Framework Document also sets out various operational requirements and refers to government guidance and policies with which the Arts Council of Wales needs to comply, in addition to its own duties and responsibilities as a Charter body, Registered Charity and public institution in Wales. As stated in the Framework Document, the Welsh Government's Culture, Sport and Tourism Departments (Arts Branch) is the sponsor department for the Arts Council of Wales and monitors its progress against key targets and milestones through quarterly meetings.



Cyngor Celfyddydau Cymru  
Arts Council of Wales

[arts.wales](http://arts.wales)